

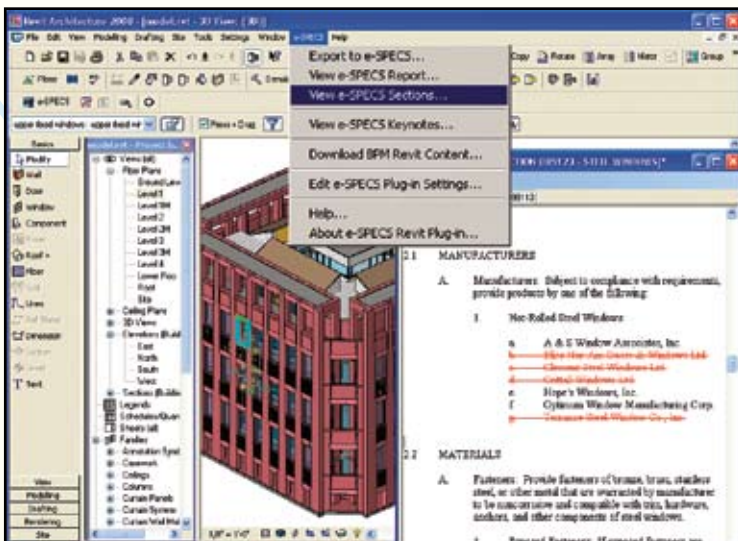
e-SPECS links your BIM Objects and Specs to get your Products Specified in more Project Manuals

e-SPECS enables architects, engineers and designers to select **BPM** products for their **BIM** projects with automated and coordinated specifications. Your clients will design your products into project manuals faster, with less manual effort and with the highest level of document coordination available. If you are already listed in the integrated **AIA MasterSpec®** guide specifications, generic **BIM** objects will include you in your customer's project manuals via the **e-SPECS** binding technology.

- **Distribution to all e-SPECS users**
- **Integrated Autodesk Revit BIM product selection**
- **BPM specification insertion into ANY project manual using intelligent e-SPECS Checklist**
- **Coordinated BPM Keynotes for detailed drawings**
- **BPM specifications accessible directly in Revit**
- **Automated Design Outline Summary Reports**
- **Use e-SPECS for specs you write for your clients**
- **Professional spec writing services available too!**

"We are constantly on the lookout for new technologies that help facilitate the selection of our products by the design community... We're leveraging the investment in our BIM and specification content by linking the two together with e-SPECS."

Steve Martinez, USG Corporation.



e-SPECS not only ensures you're specified into the project manual when your BIM content is used, but also enables access of your product specifications for viewing and markup directly in Revit.

e-SPECS® for Building Product Manufacturers

Get on Your Customer's Desktops

Your products fit a need, but how are you delivering the critical information to your customers? Relying on a Google or Yahoo search to find you and not your competition is random. Posting on all the available pay to play web sites can be costly. Posting on your own web site misses many opportunities. Providing **BIM** objects not linked to your product specs can be a waste of time and money. It is time consuming and costly to spend time trying to reach your customers at lunch-n-learns, trade shows and local meetings. Even when your clients do find your specs, the formatting and coordination time required to integrate your spec into the rest of the manual can be overwhelming and frustrating.

e-SPECS for Revit is a proven application used by the industry leading firms as well as the small and medium sized firms seeking more coordinated and higher quality construction documents. The new **e-SPECS BPM** Program brings even more value in delivering quality content and integration to thousands of users. Intelligent integration enables a single spec section to include all your similar products with checklist filtering to create the project spec section for the specific product used in each design.

About InterSpec, Inc.

InterSpec's patented **e-SPECS** software solutions automate the preparation of construction specifications and selection of products and materials. **e-SPECS** is used by thousands of architects, engineers and construction professionals to help them keep their construction models and specifications in sync while reducing the overall cost of development. With the inclusion of **BPM** content, architects and engineers will be able to supplement their project manuals with specific product data directly from **e-SPECS**. As a manufacturer's **Revit** family is used in a **BIM** model, the corresponding detailed specification criteria will automatically be included in the **e-SPECS** project manual reducing time and cost while improving coordination.

On-line Demos and Webinars

View an on-line demo at www.e-SPECS.com and register for an upcoming Live e-SPECS Webinar. See for yourself the ease of use built into **e-SPECS** and the value it can bring to your company.

InterSpec, Inc.

+1-888-50-SPECS (+1-888-507-7327)

sales@e-SPECS.com • www.e-SPECS.com

e-SPECS® is patent protected and a registered trademark of InterSpec, Inc.
All other product names and trademarks belong to their respective companies.
© Copyright 1998-2009 InterSpec, Inc.